

PUNCHING - CALIBRATING

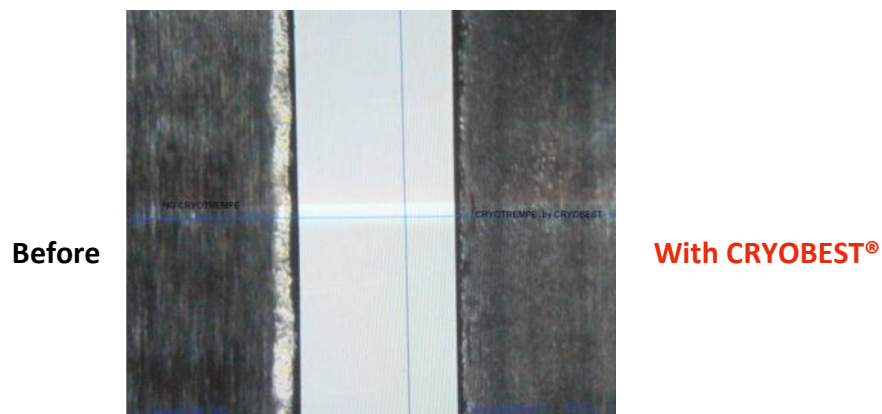
Company: SKF (St. Cyr, France)

Tools: Punch for calibration made of M2. Used in the manufacturing of bearing rings.



	<u>Before</u>	<u>With CRYOBEST®</u>
Number of operations	150.000	380.000

After the same number of parts made, the untreated punch needs to be sharpened while the treated one maintains its edge almost perfect:



Detail of the edges (x35)